

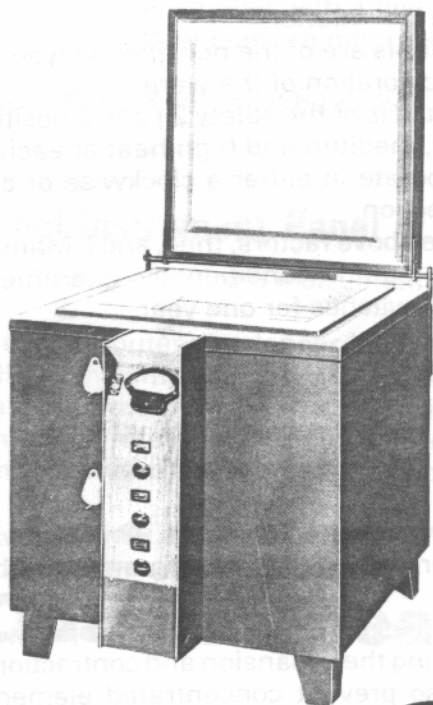


"DYNA - KILN"



UL Approved
WORLD'S FINEST - SAFEST ELECTRIC KILNS

for
"Porcelain — Ceramics — China Painting — and Decorating"
Complete with the famous L & L Patented "Dyna-Glow" Element Holders



MODEL H-8800
Shown with door
counter balance and
pyrometer system



"Dyna-Kilns" continue to be the accepted standard throughout school systems, universities, institutions and studios.

"Dyna-Kilns" have been chosen because of their superior firing characteristics, construction and heat control.

A few of the reasons for their superiority is that they are equipped with the unique patented (Pat. No. 2,744,946) "Dyna Glow" element holders, multiple peepholes, multiple temperature indication, multiple heat zones, (minimum of 3—maximum of 9 heats) and pilot light systems.

All doors are hinged, interiors are face-hardened, non-flaking elements, recessed door construction, properly graded insulation, rugged all steel case construction, and the styling is pleasing to the eye with two tone color combination.

"Dyna-Kilns" are completely UL approved for your protection. Also, further proof of the superiority of the "Dyna-Kiln" is the absolutely unconditional guarantee for one year of workmanship, elements, and switches.

Importance of "UL" Approval . . .

L and L Manufacturing Company again has shown why they are the leaders in the pottery electric kiln field, by now having and being the first to have top loading electric kilns Underwriters' Laboratory (UL) approved.

This means that the L and L top loading electric kilns have been tested by the Underwriters' Laboratory and have been given their seal of approval.

Your local electric company or fire insurance company will be happy to explain the extreme importance of having the Underwriters' Laboratory (UL) seal of approval on any appliance operated by electricity.

144 CONCHESTER ROAD • TWIN OAKS, PENNA. 19014
On U. S.. Route 322 - Just West of Chester, Pa.

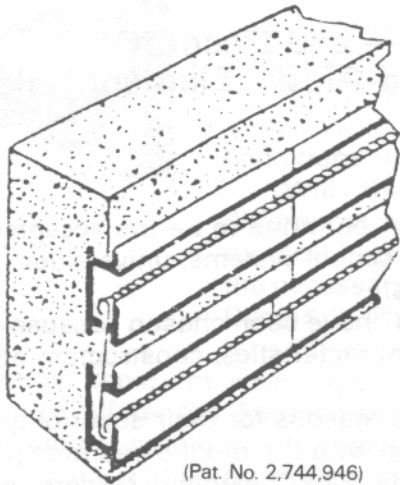
— or —

BOX 938, CHESTER, PA. 19016
215-485-6334 215-485-6530



"Dyna-Glow" Element Holders, Elements and Switch Circuits . . .

"Dyna-Glow" Elements



(Pat. No. 2,744,946)

Elements and Switch Circuits . . .

The holders also provide a cleaner, more orderly and attractive kiln interior.

The elements are of the non-flaking type and will not cause discoloration of the ware.

Each switch is of the safety 2 pole, 3 position type providing low, medium and high heat at each switch zone. They operate in either a clockwise or counter-clockwise direction.

Due to the above factors, the L and L Manufacturing Company can unconditionally guarantee their elements and switches for one year.

"Dyna-Glow" Element Holders . . .

Each "Dyna-Kiln" is equipped with the patented "Dyna-Glow" element Holders which provide the elements with excellent support, and allow element replacement without removing anything but the elements.

Also, the "Dyna-Glow" element holders permit the elements to expand and contract properly, contributing to longer element life. The element holders also prevent, during the expansion and contraction of the elements, the flaking of brick particles onto the ware. They also prevent concentrated element heat radiation from burning parts of the ware, while at the same time, distributing the radiation more evenly throughout the kiln interior, thereby providing a more even firing.

These holders do not allow the elements to protrude into the kiln, thus eliminating the hazards of electrical shock.

Insulation . . .

The proper selection of the various types of insulating fire-brick and other insulating materials provide the most economical operation, and long kiln life.

The interior of each "Dyna-Kiln" has been face-hardened to prevent dusting of the fire-brick onto the ware.

Recessed Door . . .

Typical of L & L care and thoroughness is the design of the door used on your Dyna-Kiln. Recessed lids on top loaders prevents heat loss, and also prevent cold down drafts from entering Dyna-Kiln. The door is hinged so that it does not have to be lifted off the Kiln.

A backstop for the door is also provided, so that it opens the proper distance for easy handling. Counterweights are available for all models. See Optional Equipment Sheet.



“DYNA - KILN”

WORLD'S FINEST - SAFEST ELECTRIC KILNS

Case Construction . . .

The case is of all welded steel construction, painted inside and out with heat resistant paint to prevent rusting.

The exterior is painted with a fine two tone color combination for beauty.

Four sturdy steel legs are mounted under each kiln, thus permitting free air circulation beneath the kiln.

Your “Dyna-Kiln” may be placed on practically any surface without fear of causing a fire or heat damage.

All Steel Instrument Panel . . .

The “Dyna-Kiln” front instrument panel which houses all of the wiring, is designed with perforated metal.

This contributes to a longer life for all of the connection wires, switches, and pilot lights by keeping normally high temperatures at this point, to a relatively low temperature. This design also permits installation of the pyrometer at the top of the instrument panel for convenient observation since the ambient temperature at this point will not adversely affect the pyrometer accuracy. A unique feature of the instrument panel design provides a hood over the pyrometer for protection from accidental damage.

Optional Feature For “Dyna-Kilns”

Counter-Balance System . . .

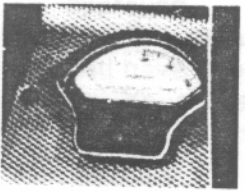
A counter-balance system has been devised by L & L for easy opening and closing of top-loading kiln doors.

This system also eliminates the possibility of accidentally dropping the door, and damaging the fire-brick of the kiln, plus damage to the ware inside the kiln through shock.

All of the kilns are so made that the counter-balance system can be factory installed, or installed by yourself at home.

“Prices for each Model are listed on Price List.”

Pyrometers . . .



Pyrometers provide the only method by which you can determine the temperature in your kiln at all times

This is of the utmost importance in telling you whether you are firing too fast, and also whether you are firing at the proper rate for the ware as recommended by the manufacturer.

A cone only tells you the maturing point, a pyrometer tells you at all points.

Accuracy of the L & L pyrometer is of a very high order and is 2% of full scale deflection.

Prices are as listed:

2500°F — \$64.00

Plus Thermocouple — \$7.50

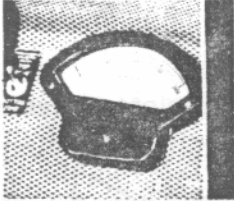


Optional Features For

"DYNA - KILNS"

January 1, 1988 Prices

Pyrometer System



The pyrometer system which consists of the pyrometer, dual thermocouple and selector switch provides the only method by which you can determine the temperature in your kiln at all times.

During the pre-heat cycle, it is very often necessary not to exceed a very low temperature for various periods of time. At the maturing point under varied firing conditions, it is desirable to take temperature readings at various points of the kiln.

With the unique design of the Dyna-Kiln switching circuits, temperature differences are easily corrected at the maturing point by measuring the temperature to detect any difference between top and bottom. Then, at the various points, the necessary adjustments are easily made by the fine switching controls on every Dyna-Kiln. Thus you can load your kiln to capacity without worrying about temperature differences.

Another important advantage — you may place your load to best advantage without regard to temperature differences. Perfect firings are possible at all times. No more refiring.

Still another great advantage of using the new L & L Pyrometer System is that better glaze results are possible when used with the Dyna-Kiln switching action. Control over the flow of glaze is possible by varying the time and temperature factors. This may be accomplished by holding your temperature at a particular level. By observing your pyrometer and using your switches to their best advantage, it is very easy to hold your temperature constant for varying periods of time until through practice you are able to obtain far superior glaze and body results.

Another important reason for using the L & L Pyrometer is to cool your kiln slowly by using a low heat during the cooling cycle. By this method it is frequently possible to obtain much better glaze and body results, particularly with fine porcelain work.

All of the Dyna-Kilns are made so that this system is factory installed, or can be installed by you at any time.

Accuracy of the L & L Pyrometer is of a very high order, and is 2% of full scale deflection.

DYNA-KILNS "UL" TOP LOADERS — ELECTRIC KILNS TO 2300 °F

| Model No. | Firing Chamber | Outside Dimensions | Volts 10-AC | Amperes For Wiring | Watts | Heats | Kiln Cost | Kiln/w Sitter | Kiln/w Sitter/Timer | Pyr/w Thermocouple | Pyrometer System | Packing Cost | Approx. Shipping Weight |
|-----------|----------------|--------------------|-------------|--------------------|-------|-------|-----------|---------------|---------------------|--------------------|------------------|--------------|-------------------------|
| *H-1100 | 11x11x11 | 20½x25½x24½ | 110 | 18 | 1980 | 3 | \$494.00 | \$574.00 | \$655.00 | \$79.75 | \$88.00 | \$8.00 | 125 lbs. |
| H-1500 | 15x15x15 | 24½x29½x28½ | 110/220 | 25.2 | 4150 | 9 | 759.00 | 839.00 | 875.00 | 79.75 | 88.00 | 11.00 | 225 lbs. |
| H-8800 | 18x18x18 | 27½x32½x31½ | 110/220 | 36 | 5940 | 9 | 979.00 | 1059.00 | 1095.00 | 79.75 | 96.00 | 15.00 | 300 lbs. |
| H-1824 | 18x18x24 | 27½x35½x40 | 110-/220 | 36 | 7920 | 12 | 1425.00 | 1505.00 | 1540.00 | 79.75 | 104.50 | 28.00 | 575 lbs. |

All 220V-3 Wire Edison System.
All Prices F.O.B. our plant
Prices may be changed without notice.

*Model H-1100 if ordered with plug in cord will not carry the UL label
It will be designated HP-1100.

144 CONCHESTER ROAD • TWIN OAKS, PENNA. 19014
On U. S. Route 322 - Just West of Chester, Pa.

— or —

BOX 938, CHESTER, PA. 19016
215-485-6334 215-485-6530

