

**NOTES:**

Control Wire:  
16 AWG, 105°C  
Power Wire:  
10 AWG, 150°C

Industrial & commercial applications may require the installation of a LOCKOUT/TAGOUT device to prevent the Kiln from operating during maintenance.

This Kiln is recommended to be wired & connected to an approved U. L. & NEC configured receptacle controlled with a disconnect switch and properly fused according to the KW load specification listed on the Kiln Nameplate. L&L Kiln Mfg., Inc., also recommends fuses rather than circuit breakers to prevent nuisance tripping.



UL 499

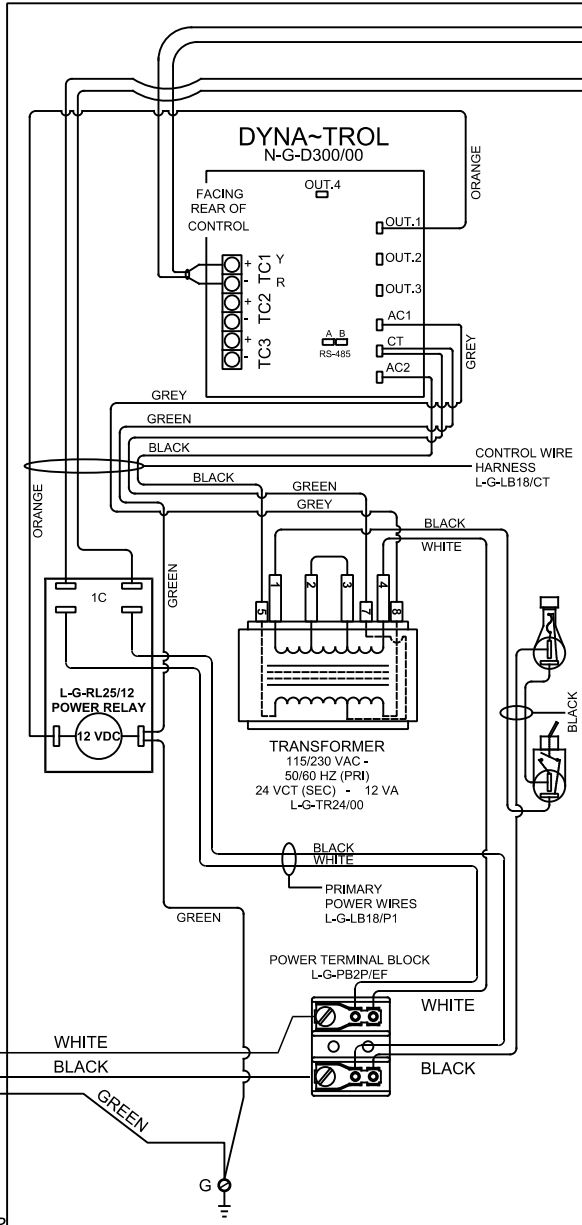
PLUG  
208/240 VAC 1Ø  
NEMA 6-20P  
12-3 CORD  
L-G-PC20/30



220V VERSION IS DIRECT WIRE

**SAFETY SWITCH BY CUSTOMER**  
Connect to  
200-240 Volt, 20 Amp Circuit  
50 or 60 Cycles.

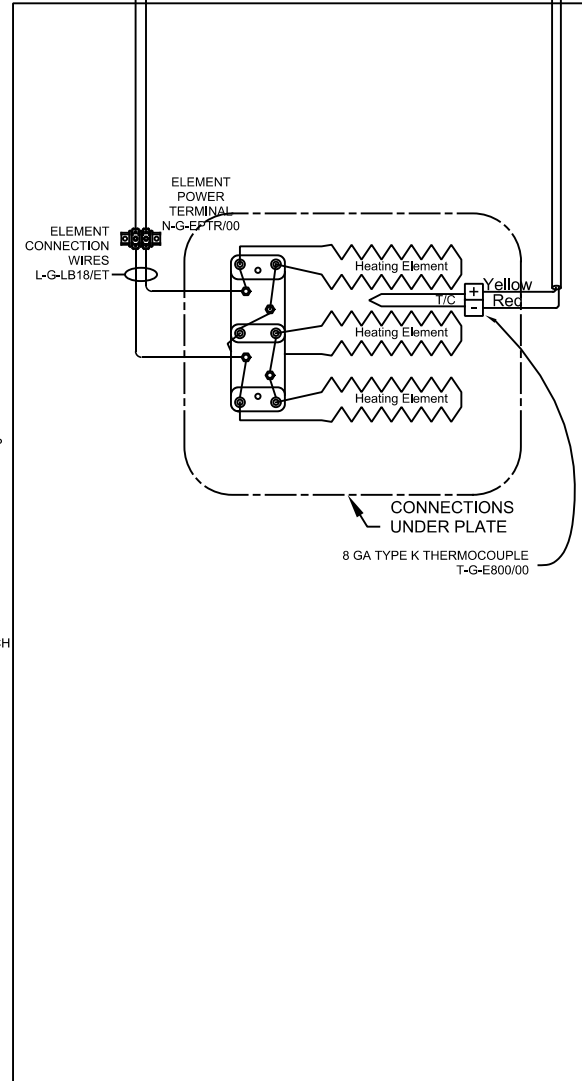
LOOKING INSIDE CONTROL PANEL



T/C WIRE - T-G-LB18/HT

SECONDARY POWER WIRES  
L-G-LB18/P2

LOOKING AT OUTSIDE OF INSULATING PLATE



ELEMENT POWER TERMINAL  
N-G-EFTR/00

ELEMENT CONNECTION WIRES  
L-G-LB18/ET

CONNECTIONS UNDER PLATE  
8 GA TYPE K THERMOCOUPLE  
T-G-E800/00

FUSE - 1/2 AMP  
L-G-FS05/00

FUSE HOLDER  
L-G-FSPB/00

ON/OFF SWITCH  
L-G-SWTG/00

CONTROL WIRE HARNESS  
L-G-LB18/CT

TRANSFORMER  
115/230 VAC -  
50/60 HZ (PRI)  
24 VCT (SEC) - 12 VA  
L-G-TR24/00

POWER TERMINAL BLOCK  
L-G-PB2P/IEF

PRIMARY POWER WIRES  
L-G-LB18/P1

L-G-RL25/12  
POWER RELAY  
12 VDC

DYNA-TROL  
N-G-D300/00

**Model DLH11-DXB  
208 Volts**

VOLTAGE	208 / 1 / 50-60		
WATTS	2800		
FULL LOAD AMPS	L1	L2	L3
	13.5	13.5	∞
POWER SUPPLY	FUSE	WIRE	
	20A	16 AWG	
ELEMENTS (E-D-DHLL/20)	QTY	OHMS	
	3	5.0	

**Model DLH11-DXB  
220 Volts**

VOLTAGE	220 / 1 / 50-60		
WATTS	2800		
FULL LOAD AMPS	L1	L2	L3
	12.7	12.7	∞
POWER SUPPLY	FUSE	WIRE	
	20A	16 AWG	
ELEMENTS (E-D-DHLL/40)	QTY	OHMS	
	3	5.6	

**Model DLH11-DXB  
240 Volts**

VOLTAGE	240 / 1 / 50-60		
WATTS	2800		
FULL LOAD AMPS	L1	L2	L3
	11.7	11.7	∞
POWER SUPPLY	FUSE	WIRE	
	15A	16 AWG	
ELEMENTS (E-D-DHLL/30)	QTY	OHMS	
	3	6.6	

REV.#	DATE	REVISION DESCRIPTION