

NOTES:

Control Wire:
16 AWG, 105°C
Power Wire:
10 AWG, 150°C

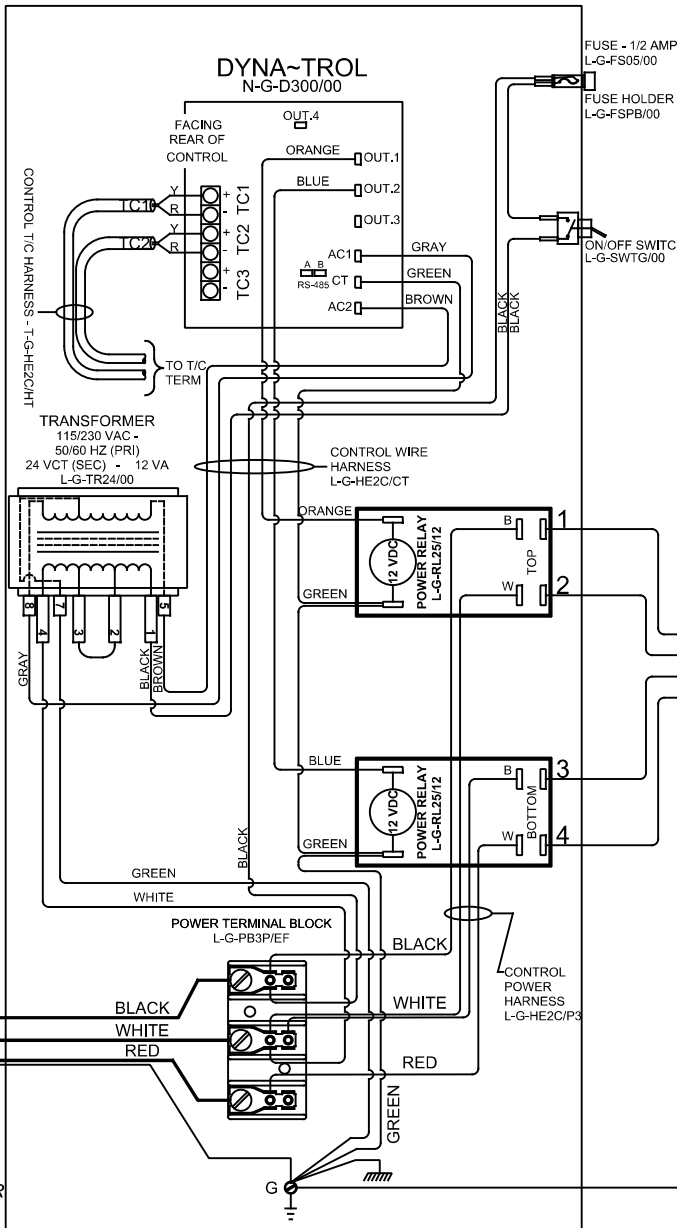
Industrial & commercial applications may require the installation of a LOCKOUT/TAGOUT device to prevent the Kiln from operating during maintenance.

This Kiln is recommended to be wired & connected to an approved U. L. & NEC configured receptacle controlled with a disconnect switch and properly fused according to the KW load load specification listed on the Kiln Nameplate. L&L Kiln Mfg., Inc., also recommends fuses rather than circuit breakers to prevent nuisance tripping.

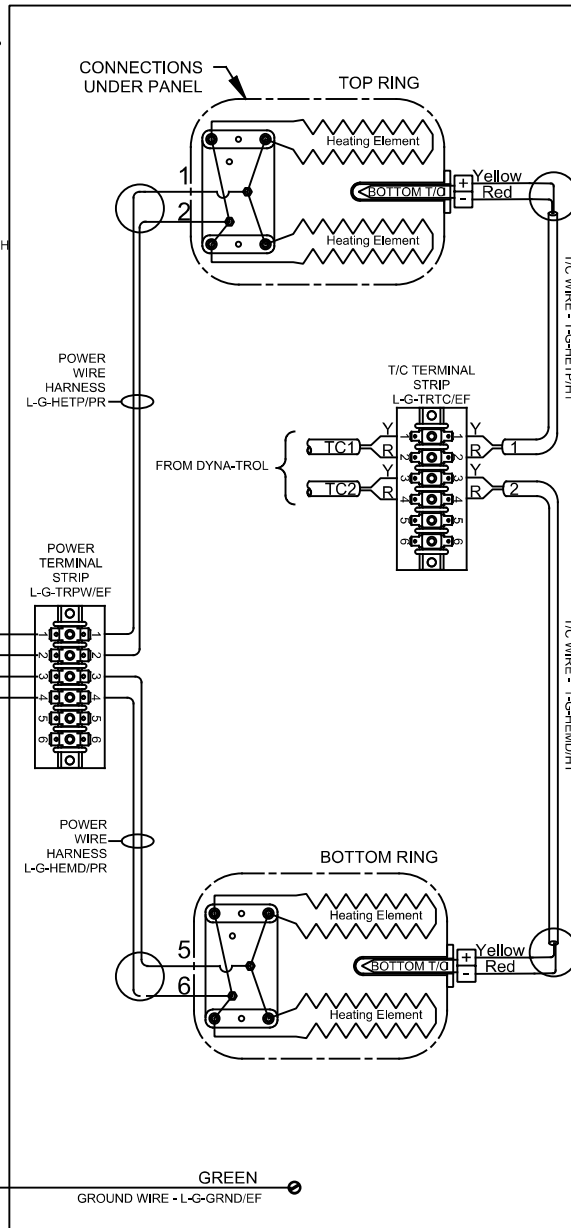


SAFETY SWITCH BY CUSTOMER
Connect to
240 Volt, 2 Wire, Single Phase - or
208 Volt, 2 Wire, Single Phase
50 or 60 Cycles.

LOOKING INSIDE CONTROL PANEL



LOOKING AT OUTSIDE OF ELEMENT COVER PANEL



Model e23S-208-3P	
VOLTAGE	208 / 3 / 50-60
WATTS	8,320
FULL LOAD AMPS	L1 L2 L3 34.6 20.0 20.0
POWER SUPPLY	FUSE WIRE 50A 6 AWG
ELEMENTS	QTY OHMS 4 20.0

Model e23S-240-3P	
VOLTAGE	240 / 3 / 50-60
WATTS	9,460
FULL LOAD AMPS	L1 L2 L3 34.1 19.7 19.7
POWER SUPPLY	FUSE WIRE 50A 6 AWG
ELEMENTS	QTY OHMS 4 23.44

REV. #	DATE	REVISION DESCRIPTION
A	3/17/19	CHANGED ELEMENTS TO PARALLEL